

## Springing into PILD and Showing Appreciation

*Rick Griffiths (NM), NEAFCS President*

It is a busy time of year for the association. I am grateful for everyone participating on the national committee, writing and reviewing impact statements, judging national awards and concurrent session proposals, and all the additional work being done throughout the Association. When this letter comes out, I will be meeting with some of you at the JCEP Public Issues Leadership Development (PILD) conference in Arlington VA, and I'm looking forward to seeing everyone.

I want to thank Robin Ridgley and Vice President of Public Affairs Christine Zellers for serving as NEAFCS' representatives on the PILD Planning Committee and planning our Association at PILD. I would also like to thank Past President Susan Routh for serving as the Planning Committee Chair and Immediate Past President Julie Garden Robinson for serving as the Planning Committee Co-Vice Chair.



# THANK YOU!



ROBIN RIDGLEY (IL)



CHRIS ZELLERS (NJ)



SUSAN ROUTH (OK)



JULIE GARDEN-ROBINSON (ND)

**I appreciate the members' support and understanding of the Board's decision to increase Annual Session registration fees.** I assure you that the association will continue to award scholarships to National Award Winners, Annual Session First Time Attendees, Affiliate Presidents, Speaker Stipends, and other member scholarships. **In addition, hopefully, you have heard about the new scholarships offered through the Endowment to assist with Annual Session registration and/or travel.** More information on these scholarships can be found on the website here - <https://www.neafcs.org/endowment>.

In May, the National Board will convene for its once-a-year in-person meeting, where our primary goal will be developing the new strategic plan. We have contracted with an external facilitator who completed a survey of stakeholders. The new plan will be shared at the Annual Session in Tucson, Arizona.

I hope spring is blooming where you are, and you are beginning to enjoy warm spring weather.

*-Rick*

Questions, advice, or concerns to share with Rick? Contact him at [rickgrif@nmsu.edu](mailto:rickgrif@nmsu.edu) or call at 505-334-9496



National Extension Association  
of Family and Consumer Sciences

## What YOU Need to Know NOW in NEAFCS!

### *National Office Staff*

- [NEAFCS Town Hall Meeting](#) will be Tuesday, April 23rd at 2:00pm EST
- NEAFCS National Officer Candidate Application – Deadline May 1. [Click here if you are interested in serving on the NEAFCS Executive Board](#) - this website provides resources on each position including qualifications, expectations, and more.
- [NEAFCS Endowment Grant](#) - Deadline May 15

**Be entered to win conference registration by unscrambling the word hidden in the newsletter!**

**Unscramble the letters to the word hidden in the newsletter and email your answer to Rick Griffiths. The first five correct answers will be entered to win! The letters for the answer are hidden throughout the newsletter in **orange**.**



Email all answers to Rick Griffiths  
[rickgrif@nmsu.edu](mailto:rickgrif@nmsu.edu)

Curious about what is discussed at the monthly Executive Board meetings?

Log in to [neafcs.org](http://neafcs.org) and click document library in the member center tab to find monthly meeting notes!

Share comments, concerns, and questions about the eNEAFCS network newsletter with NEAFCS Secretary Lisa Peterson at [lap5981@illinois.edu](mailto:lap5981@illinois.edu)

## Final Call! 2024 NEAFCS Board Applications Due May 1

*Julie Garden-Robinson (ND), Immediate Past President*

We are in our final weeks of collecting board applications for our upcoming election to be held at our 2024 conference in Tucson, AZ. **Applications are due to [julie.garden-robinson@ndsu.edu](mailto:julie.garden-robinson@ndsu.edu) and Danielle Jessup ([djessup@executiveoffice.org](mailto:djessup@executiveoffice.org)) by May 1 for these positions:**



**APPLY TODAY!**

**POSITIONS OPEN ON THE NEAFCS EXECUTIVE BOARD**

- ✓ President-Elect
- ✓ Secretary
- ✓ Vice President for Member Resources
- ✓ Vice President for Professional Development
- ✓ Eastern Region Director
- ✓ Western Region Director

*TODAY A READER... TOMORROW A LEADER*

All NEAFCS members can learn more about the board officer candidates through their 3-minute recorded video, which is new this year. These videos will be available on the NEAFCS website before our national conference and voting delegates will carry forward the wishes of their affiliate.

We have made it easy to find everything you need for your application. Visit the [Member Center](#) section of the NEAFCS website. If you have any questions, please reach out to me or members of our committee.

**If you have questions or concerns about running for an office? Contact Julie at [Julie.Garden-Robinson@ndsu.edu](mailto:Julie.Garden-Robinson@ndsu.edu) or 701-231-7187**



## Check out the In-Depth Sessions We Have Planned for You!

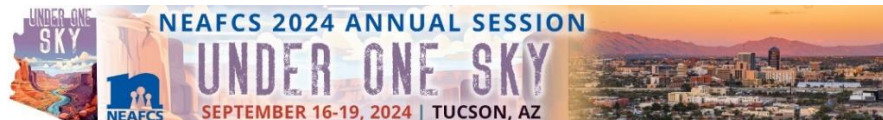
*Dan McDonald (AZ), 2024 NEAFCS Annual Session Planning Committee*

The Sky's the Limit for this year's annual session in Tucson, Arizona, and do we have some fun and informative in-depth sessions lined up for you!

- \* Check out [Biosphere2](#), a remarkable scientific center located just north of Tucson.
- \* Explore the Flandreau [Planetarium](#) located on the University of Arizona campus.
- \* Learn about the history and economic impact of the [wine industry](#) in Arizona.
- \* See the future of agriculture close up at the [campus farm](#) and [Tucson Village Farm](#).
- \* Experience the cultural richness of Tucson as a UNESCO [City of Gastronomy](#).
- \* Learn about food safety during food demonstrations at our innovative education center, [The Garden Kitchen](#).
- \* For the more athletically inclined, hike the historic [Tumamoc Hill](#) and learn about the cultural significance of the location and the biodiversity existing at the doorsteps to downtown Tucson.
- \* And for our Life Members, we have a special treat at the Arizona Sonora [Desert Museum](#).



We're looking forward to seeing all of you this September in Arizona and hope that you get to see and enjoy the splendor of the Desert Southwest!



Share comments, concerns, and questions with Dan at  
[mcdonald@cals.arizona.edu](mailto:mcdonald@cals.arizona.edu)

## Hot off the Presses

*Chris Zellers (NJ), VP Public Affairs*

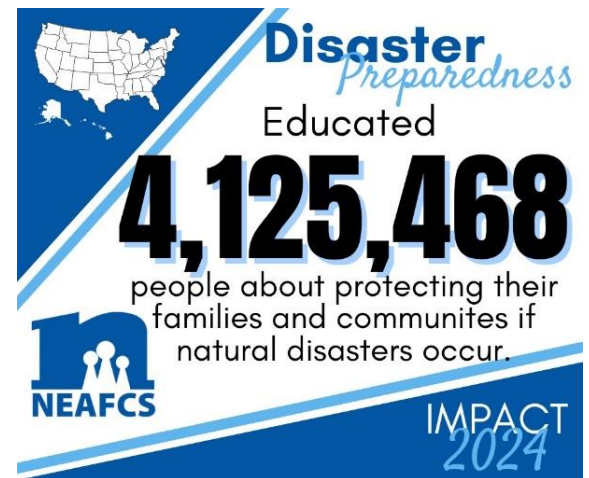
March was followed by another busy month for the Public Affairs Committee. **The Education committee wrote 10 individual Impact Statements from the 254 statements received from across the country.** Then a two-page flyer was created for members to distribute to stakeholders along with any or all of the 10 area impact statements. Topics include Childhood Obesity and Prevention, Community Health and Wellness, Diabetes Prevention and Management, Disaster Preparedness, Family Stability and Vitality, FCS & STEM, Financial Management, Food and Nutrition, Healthy Homes and Environment, and Home Food Safety and Prevention. Many thanks to members of the education committee who worked diligently to frame the collective programming and outreach of our members to create a resource to share with stakeholders. **Special thanks to Amanda Dame, Education Chairperson who worked tirelessly to edit and review the statements and of course to Danielle Jessup from Partners who keeps us all on track.**



March was Living Well Month and the Advocacy Committee encouraged members to use NEAFCS resources created by the committee for promotion. The committee would love to hear how you used the materials, so please share your ideas so they can be shared with others.

The marketing committee did an incredible job making infographics for all the impact statements. Be sure to check them out and use them to promote NEAFCS member's hard work!

Many thanks to the committee members and the chairs of all three committees for doing such great work!



**If you have questions, concerns, or comments about public affairs, contact Christine at [zellers@njaes.rutgers.edu](mailto:zellers@njaes.rutgers.edu)**

## It's Not Too Late! - Run for a National Leadership Role

*Michelle Wright (TX), Appointed VP Member Resources*

If you have ever considered running for a NEAFCS leadership position, it's not too late. Serving in a leadership role can help you grow by leaps and bounds professionally. Here are several ways you will grow:



**Skill Development:** Leadership roles often require individuals to develop and hone skills such as communication, decision-making, strategic planning, and conflict resolution.

**Networking:** Leadership positions provide opportunities to network with other professionals in the field, which will foster valuable connections and exciting collaborations.



**Personal Knowledge:** You will undoubtedly gain insights into industry trends, best practices, and emerging issues, as well as expertise in FCS-related opportunities and topics.

**Personal Growth:** Taking on leadership responsibilities will make you more confident, resilient, and adaptable to any situation.



Finally, **Influence and Impact:** Becoming a national officer will provide you with a platform to advocate for important causes that will affect positive change within our profession.

So, there are a multitude of reasons why you should consider running for a national office. As I mentioned earlier, it's not too late but the clock is ticking. Apply today to light the way for others to follow. **Applications are due Wednesday, May 1<sup>st</sup>.** [Click here](#) to find out more about candidate qualifications and the application, or visit [neafcs.org](http://neafcs.org) and click on the member center tab, then national officer candidate resources.

**If you are interested, please contact Michelle at [michelle.wright@ag.tamu.edu](mailto:michelle.wright@ag.tamu.edu) and she will connect you with someone from that subcommittee.**

## In the Realm of Professional Development

*Marcia Parcell (IN), VP Professional Development*

**NEAFCS members, thank you to those who submitted proposals for concurrent and Showcase of Excellence sessions at the 2024 Annual Sessions.** The co-chairs of Professional Development Program Development, Amber Allen and Andrea Haubner, have been managing the review process of the submissions and organizing them into the annual session schedule. Notifications will be sent soon notifying members of their acceptance to present at Tucson. The anticipation is building!



There is also anticipation about who will be the next Vice President of Professional Development. You can learn about the preferred qualifications for the National Board Positions by viewing [the Leadership Ladder](#). **If you want to discuss the role, please contact Marcia Parcell with your questions.** I will be happy to share about this role. The deadline for National Office Candidates is May 1<sup>st</sup>.

**May 1<sup>st</sup> is also the deadline for action plans for 2024-2025, so the Professional Development subcommittees are meeting in April to confirm their plans.** Thank you to the NEAFCS members who are active in committee work for the NEAFCS organization. You are forming the future of NEAFCS and the leadership too.

Remember to save the dates for upcoming NEAFCS Professional Development webinars:

- "Let Me Tell You What You Need" will be the second hot topic session on **April 17<sup>th</sup> at 2 PM EST.**
- Habit Shift Mindset will be presented on **April 26<sup>th</sup> at 2:30 PM EST.**
- **May 1<sup>st</sup>** is "Planning AHEAD: A Tool to Ease End of Life Planning" at **2 PM EST.**

**Don't hesitate to contact Marcia Parcell, VP of Professional Development, should you have questions or need assistance with this process. Her email is [mparcell@purdue.edu](mailto:mparcell@purdue.edu)**



## What is the Endowment? And What it Does for You!

*Lance Hansen (ID), NEAFCS Treasurer*

Endowments play a crucial role in various organizations' financial stability and long-term sustainability, particularly in the nonprofit and educational sectors. An endowment is a financial asset donated to an institution, stipulating that the principal amount remains intact. At the same time, its investment income is utilized to support the organization's activities and mission. Here's how our endowment benefits NEAFCS members:



- **Financial Stability:** Endowments provide a stable and reliable source of income. Unlike donations or grants, which can fluctuate from year to year, endowments offer a consistent revenue stream. This stability allows the Endowment Committee to make plans on how many grants and scholarships can be provided each year to our members.
- **Flexibility:** As our endowment grows, our organization will have more flexibility in terms of how it can utilize the generated income. Whether it's funding scholarships for members, offering small grants, or used to provide more resources to our members, these are just a few ideas on what future we can offer by donating to the endowment.
- **Investment Growth:** Endowments are typically invested in diversified portfolios aimed at generating returns over the long term. As these investments grow, so does the income generated from the endowment, providing organizations with additional financial resources to expand their impact and reach.
- **Legacy Building:** Endowments allow donors to leave a lasting legacy by supporting causes and organizations they care about deeply. By establishing an endowment, donors can ensure that their contributions continue to make a difference for generations to come.
- **Risk Mitigation:** Endowments are a buffer against economic uncertainties and market fluctuations. By maintaining a diversified investment portfolio, organizations can mitigate risks associated with volatility in financial markets, safeguarding their financial stability and ability to fulfill their mission.

We all play a part in growing our endowments, which is critical in supporting the long-term sustainability and growth of NEAFCS. All contributions, regardless of size, will help ensure that many more generations of FCS professionals will have the same opportunities we have had as members of NEAFCS. Through the prudent management and strategic allocation of resources, our endowment helps fulfill the mission of NEAFCS. It makes a lasting impact on our members and the people we serve across the nation.

**If you have questions or concerns for the endowment committee, contact the endowment chair, Terri Mayhew. Her email is [mmayhew1@nycap.rr.com](mailto:mmayhew1@nycap.rr.com)**



# Voices from the Past – Present – Future

*Christine Kniep (WI), Past President & Historian*

**On June 29<sup>th</sup>, 1933, in Milwaukee, WI, during the annual meeting of the American Home Economics Association, The National Home Demonstration Agents' Association became a reality.** Present were twenty-one home demonstration agents from 13 states: Alabama, Illinois, Michigan, Minnesota, Missouri, New Hampshire, New Jersey, New York, North Dakota, Ohio, Vermont, Virginia and Wyoming.



The 90<sup>th</sup> Anniversary Committee has asked each of these 13 states to collect stories of their work and membership in NEAFCS from a retired or life member, the affiliate president, and a "new" member – the start of an ongoing narrative history of NEAFCS. Between now and our 100<sup>th</sup> Anniversary, stories will be collected from all of the affiliates. These stories will be included in our newsletter, posted on our website, and included in our historical records.

**It is with great pleasure that I share the second set of stories from the Michigan Affiliate, featuring:**

- \* **Past-Teresa A. Clark-Jones (Terry Jones)-Life Member, Retired**
- \* **Present-Courtney Aldrich-MEAFCS President 2024**
- \* **Future-Joanna Urban**

## PAST

I worked for Michigan State University Extension for 37 years and was a member of NEAFCS/MEAFCS for 29 yrs. I joined as soon as I was eligible. I began my career as a 4-H Program Assistant and retired as Senior Extension Educator.

For the last nine years of my employment my program responsibilities were in housing, financial management, parenting, and social-emotional education. I became a member of NEAFCS/MEAFCS at the encouragement of my mentor as an opportunity for professional and leadership development. But it was also a fantastic way to increase contacts across both my state and country. I had the honor to serve on Michigan's board including as president in 1999-2000.

My favorite memories of NEAFCS/MEAFCS events were presenting with my co-workers. It was always a wonderful way to bond and do awesome work together. **My wish for NEAFCS/MEAFCS is success at encouraging Extension professionals to become a part of this professional organization.**



## PRESENT



My name is Courtney Aldrich, and I am the current president of the Michigan affiliate. I have 6.5 years in Extension and 6 years in NEAFCS. I am a program instructor on our Child and Family Development team at Michigan State University Extension.

I provide parent and caregiver programming on topics including child development, guidance, and learning. One of my current program efforts is to create online self-paced versions of our programs to improve accessibility. It was just a "given" that I would join NEAFCS after I began working at Extension. My supervisor had me attend a meeting within my first week and before I knew it I was enrolled!

Over the years I have learned the wonderful connections that can be made through NEAFCS. Being a part of my local affiliate allowed me to make connections beyond my immediate role,

which has been helpful in referring participants and developing working relationships. Nationally, I have been able to connect with others who do similar work to mine in other states. We have been able to share resources and create working partnerships.

I have fond memories of the annual session in Hershey, Pennsylvania. From making my own candy bar to presenting, this annual session was when I began to feel connected to the association's work. (And those chocolate martinis!!) **My wish for the association is that it can grow and develop with the ever-changing work of Extension, providing vital professional support and connections that help all of us serve our communities better.**

## FUTURE

Greetings! My name is Joanna Urban. I've been working with Michigan State University Extension for two years. I joined NEAFCS shortly after I began my employment with Extension. As a Community Nutrition Instructor, I facilitate SNAP-Ed direct education for youth and adults, and I provide nutrition and physical activity resources to the community. In addition, I support local partners who are working to promote long-term community health. For example, I just began working with a nearby city council to coordinate a monthly fresh produce mobile food pantry.

I joined NEAFCS because I wanted the ability to network with Extension workers in other states. Also, I was interested in the opportunities to participate in meaningful professional development. Perhaps most of all, I was hoping that joining NEAFCS would help me acclimate to my new role with Extension. Membership has provided me with all this and more. One of the best decisions I made was signing up for the Leadership Experience program. As a new NEAFCS member, I was paired with a mentor with whom I meet monthly. My mentor helps me navigate the expansive NEAFCS website and highlights member opportunities. I truly consider my mentor to be a friend. Leadership Experience participants attend professional development sessions, such as Real Colors, and meet regularly to connect with others in the program. I cannot recommend the Leadership Experience enough to new NEAFCS members! **My wish for NEAFCS is that the organization continues to grow and thrive by actively engaging all members.**

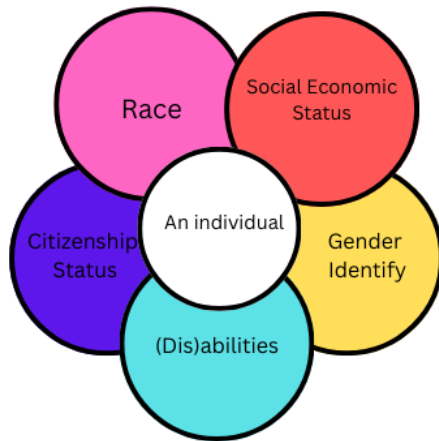


## The Role of Intersectionality in Extension Education

*Kyleigh Brown (MO), Diversity Committee Apprentice*

The term intersectionality, first coined by Kimberlé Williams Crenshaw in 1989, is a theoretical perspective that acknowledges that an individual's experiences are shaped by the intersection of various social factors, such as race, gender, class, and more.

When considering extension education and intersectionality together, it implies a recognition of the diverse needs, backgrounds, and experiences of the target audience for extension programs.



Here are some key points to consider:

**Cultural Competence:** educators need to be aware of the various cultural nuances and perspectives present in the community. This involves ensuring that educational materials and approaches are respectful and relevant. This means acknowledging that diverse identities exist within a larger culture.

**Community Partnerships:** Collaboration with local community organizations and leaders is crucial. These folks have valuable insight into the unique needs of the community.

**Accessible Resources:** provide educational materials that are available in multiple formats, languages, and mediums to cater to diverse learning preferences and abilities.

**Empowerment and Agency:** we aim not only to transfer knowledge but also to empower individuals within diverse communities. This involves recognizing and fostering the agency of participants to apply the knowledge gained in ways that are meaningful within their unique contexts.

In summary, the integration of intersectionality into extension education involves a commitment to inclusivity, cultural competence, and adaptability to meet the varied needs of individuals within diverse communities. It enhances the effectiveness and relevance of extension programs by acknowledging and addressing the complex interplay of social identities and experiences.



Questions for the diversity committee? Contact the VP of Member Resources, Michelle Wright at [michelle.wright@ag.tamu.edu](mailto:michelle.wright@ag.tamu.edu)



## Springing into Action: Planning Ahead for Next Year's Award Season

*Noel Wilkinson, (AZ) Awards & Recognition Training Committee Member*

March 19th marked the Vernal Equinox in the Northern Hemisphere – a celestial event where day and night find perfect equilibrium, a balance I find fascinating. It's funny how such a scientific concept can find its way into our everyday lives. Just the other day, my daughter was excited about the arrival of Spring; she was especially eager for the longer play hours in the evenings. Meanwhile, I couldn't shake from my nightmares the impending yardwork that comes with the onset of Arizona's spring weather (so many spikey plants down here). But amidst the transition from winter to spring, there's an underlying lesson – the cyclical nature of life and the importance of readiness for what's to come. Just as nature meticulously readies itself for the eventual return of winter, we too, as members of NEAFCS, should take this time to begin laying the groundwork for the upcoming award season.



As the vernal equinox ushers in the joys of spring, it serves as a poignant reminder of the delicate balance between light and dark, anticipation and reflection. Similarly, preparing for next year's awards calls for a blend of introspection on past achievements and proactive planning for future endeavors.

**View Your Work through an Award Lens:** Extension professionals already make significant contributions to their communities through projects, programs, and initiatives. Take the time to view your work through the lens of what might make a compelling award submission. Identifying unique approaches, innovative strategies, or impactful outcomes within your existing work can help highlight strengths and showcase expertise in your award narrative.

**Prepare Your Materials:** Like gathering supplies and fortifying shelters in anticipation of winter's return, start gathering and preparing supporting materials needed for award submissions well in advance. Whether it's compiling a portfolio of work, gathering testimonials, or refining your resume, having these materials ready will streamline the submission process. Strengthen award submissions by quantifying the impact of work through data, testimonials, or success stories. Collect and document evidence of outcomes and results achieved through projects as tangible evidence of contributions to the field.

**Stay Resilient:** Finally, remember that the award nomination process can be competitive, and not every submission will result in an award. If you've submitted without success, consider it as an opportunity for growth. Take feedback, assess how to enhance your submission, and approach the process with renewed determination. By viewing work through the lens of potential award criteria and taking proactive steps to showcase achievements, you'll be better positioned to stand out. Persistence often pays off, so stay resilient, keep refining your approach, and don't hesitate to try again. Your efforts may lead to the recognition you deserve.

Just as nature meticulously readies itself for the eventual return of winter, we too, as members of NEAFCS, must lay the groundwork for our own season of recognition and achievement. Through introspection, collaboration, and proactive planning, we can transform the work we do every day into compelling narratives worthy of recognition. Here's to a season of growth, collaboration, and the celebration of our collective accomplishments.



**If you have questions, concerns, or comments about awards, contact Donna at [donna.stangl@okstate.edu](mailto:donna.stangl@okstate.edu)**

## Leadership Moments

*Jennifer Bridge (KY), NEAFCS President-Elect*

When I started exploring ideas to expand opportunities for member involvement, a book club seemed like a logical choice. A book club would involve a short-term, low-cost way to connect beyond committees and special projects. I thought maybe 30-40 members would join. I was pleasantly surprised when 80+ members signed up. While not everyone joins the live discussion, many watch the recorded sessions and share their thoughts and experiences with me afterwards.

**We will finish up the series on *Dare to Lead* with our last session on April 30, 3:00 p.m. ET. We will focus on the remainder of the book. Feel free to join in!**



This month, the leadership quotes will come from two modern giants in the field of leadership and personal development: John Maxwell and Brene Brown. Enjoy!

**"The single biggest way to impact an organization is to focus on leadership development. There is almost no limit to the potential of an organization that recruits good people, raises them up as leaders and continually develops them."**

*-John Maxwell*

**"AT THE END OF MY LIFE, I WANT TO BE ABLE TO SAY I CONTRIBUTED MORE THAN I CRITICIZED."**

**-Brene Brown**

Share comments, concerns, and questions with Jennifer at [jennifer.bridge@uky.edu](mailto:jennifer.bridge@uky.edu)

## CENTRAL REGION UPDATE

*Barb Wollan (IA), Central Region Director*

During this busy season of programming, ELC, PILD, award applications, and impact statements, central states have few actual association activities to report, but they are much in the way of plans!

Many states are planning local celebrations of NEAFCS's 90th birthday! It will be fun to share some of those next time!

In addition, a major focus for the central region is planning for the 2025 annual session to be hosted by the region in Grand Rapids MI. Tri-liaisons Courtney Aldrich (MI), Samantha Roth (MN), and Melissa Rupp (OH) have developed an exciting theme, and members from all states had the opportunity to give input on the logo for the conference. We're not unveiling those here – let's focus on our wonderful 2024 conference in Tucson first! Committee formation is underway, and we think you will love what the Central Region puts together!



**Share comments, concerns, and questions with Barb at**  
[bwollan@iastate.edu](mailto:bwollan@iastate.edu)



## Read about our 2023 National Award Winners Monthly!

Learn more about the award winners and get inspired at <https://neafcs.memberclicks.net/2023-award-winners>.

### Financial Fridays

Sarah Poole & Team  
University of Tennessee Extension

Financial Fridays is an online financial education series aimed at helping consumers gain knowledge to help them feel more confident about their money in today's ever changing economy.

A core component of Financial Fridays was the partnerships we developed and made use of during each of the sessions such as:

- Local bank branch managers
- Consumer economics specialists
- Certified Public Accountants



1st Place National Winner:  
Florence Hall Award



### Tri-County Homestead Education Series

Nichole Huff & Team  
University of Arkansas Extension

After the pandemic, a flux of new Arkansas residence moved in to rural areas in the hopes of becoming more self-sufficient. The FCS Extension Agents in Boone, Carroll, and Marion Counties teamed up to provide education to these individuals on safe practices to use while homesteading.



1st Place National Winner:  
Food Safety Award



### Elizabeth Martin

Louisiana State University Extension

Elizabeth Martin's mentorship with Leslee Blanch has become a special friendship, for she is eternally grateful. Leslee has become her biggest work supporter and cheerleader.

"Leslee's lesson helped me to learn more about working with individuals who think or work differently than I do...Because of having Leslee as my Mentor, I have been encouraged to become more involved in NEAFCS and Louisiana Extension Association of Family and Consumer Sciences (LEAFCS)."



Elizabeth Martin

MENTOR  
Leslee Blanch

University of Idaho Extension



1st Place National Winner:  
Greenwood Frysinger Award



### Freeze It

Carrie Elsen & Team  
University of Missouri Extension

The 'Freeze It!' curriculum to increase the frequency of home-prepared meals by teaching freezer food preservation, meal preparation, and food waste reduction

- Each session participants:
- prepare a meal
  - package it in reusable containers
  - rapidly freezes at home.

During each stage "rethink and refusal" methods are prioritized; including meal planning, food preservation, food sharing, and packaging education.



1st Place National Winner:  
Family Health and Wellness Award



Have a question about awards or previous award winners? Contact the VP of Awards and Recognition, Donna Jung, at [donna.stangl@okstate.edu](mailto:donna.stangl@okstate.edu)



National Extension Association  
of Family and Consumer Sciences