

# National Extension Association of Family & Consumer Sciences

National Extension Association of Family and Consumer Sciences professionals provide families with evidence and science-based programs enabling them to improve their family's well-being in health, financial management, food and nutrition, food safety, healthy homes and environments, family life and technology. Thereby creating vibrant communities in which we all live, work, and play.

Extension FCS favorably impacts families by teaching consumer skills that empower them to **manage resources and money** for improved quality of life.

View the full report at <https://bit.ly/42bXfAZ>

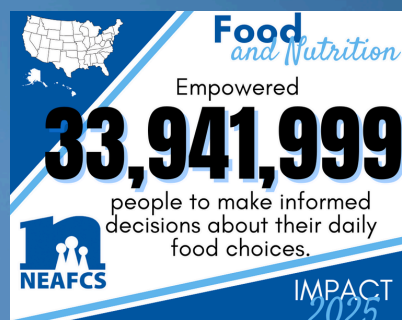
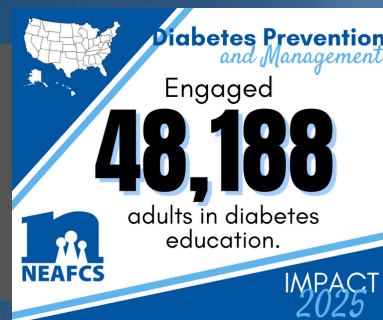


Extension FCS **community health and wellness** programs positively impact communities through educational programs encouraging healthy lifestyles and policy, systems and environment changes that enhance family and community well-being.

View the full report at <https://bit.ly/4iKANpu>

**Diabetes** is a common, serious, and expensive disease in the US, with nearly 98 million Americans at-risk for developing this health condition. In many communities, Extension FCS is the trusted local source for information about how to prevent or live with the disease.

View the full report at <https://bit.ly/4hQ4Drs>

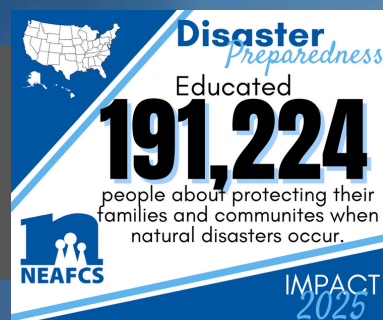


Access to nutritious **food and eating habits** have a direct impact on health. For many communities Extension FCS is the only source for nutrition education and instruction about preparing food at home.

View the full report at <https://bit.ly/4j3x7yV>

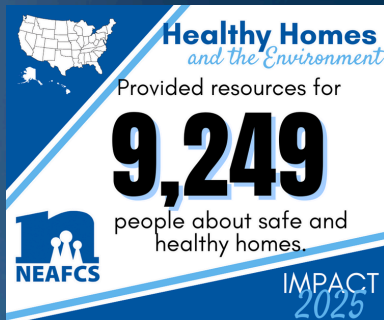
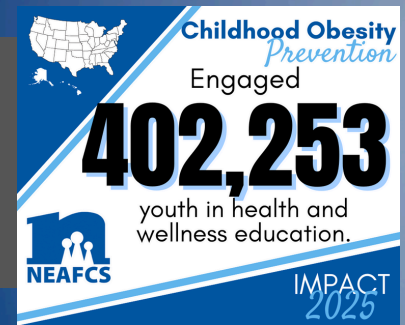
**Natural disasters** have life-changing impacts on families. Extension FCS provides timely information on preparing for disasters and providing information related to food safety and recovery following disasters.

View the full report at <https://bit.ly/4c9WsoK>



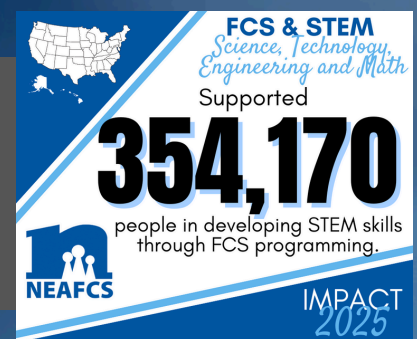
**Childhood obesity** for youth, ages 2-19, is a national epidemic. Extension FCS programs seek to prevent chronic childhood obesity by engaging youth and families in healthy behaviors and creating environments that promote physical activity and nutritious eating.

View the full report at <https://bit.ly/4cdj6MP>



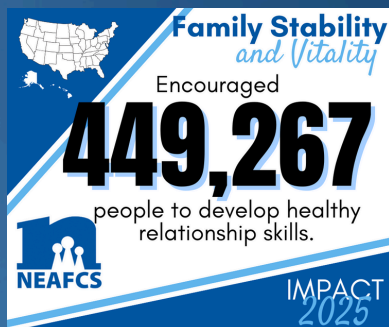
Living in **safe, healthy homes and environments** improves overall health and quality of life. Extension FCS programs help consumers recognize and address mold, radon and indoor air quality.

View the full report at <https://bit.ly/4iKLPuU>



Extension FCS research-based **STEM (Science, Technology, Engineering, and Math)** programs provide practical skill development and support career-related resources for youth and adults.

View the full report at <https://bit.ly/4kXJcYh>

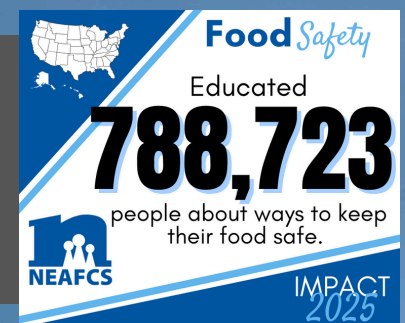


**Family stability and vitality** are important components of the Extension Family and Consumer Sciences mission.

View the full report at <https://bit.ly/4iFUVJp>

Increased interest in local food and home gardening has led to more requests for information about **preserving and processing food**. Extension FCS is the trusted resource for accurate and safe solutions for home food processing and preservation.

View the full report at <https://bit.ly/4l7JSKO>



Learn more about the impacts we make on communities by accessing our website at [www.neafcs.org/impact-statements](http://www.neafcs.org/impact-statements)

Get to know your local Extension Family and Consumer Sciences professionals. Find us at your local extension office, on campus at our land grant universities or out in the community helping to make living easier.

For more information contact Christine Zellers, **NEAFCS Vice President Public Affairs** at [zellers@njaes.rutgers.edu](mailto:zellers@njaes.rutgers.edu)